

# BMB

# Category 7

4-PAIR SSTP TWISTED PAIR LAN CABLE



High Quality Network Cable

[www.bmblink.ir](http://www.bmblink.ir)

# BMB

# Description

BMB Cat7 SSTP Horizontal Cable is a 100  $\Omega$ , double-shielded cable, designed for very high data rates for indoor installations.

The cable is housed in a gray Halogen-free (LSZH), flame-retardant (HFFR) or PVC jacket (Blue) with a braided shield, and includes four individually shielded twisted pairs.

The cable conforms to the ISO/IEC 11801 definition of Cat 7 cables as specified in IEC 61156-5 and 61156-6 for CLASS F link and CENELEC EN-50173 drafts. It has been tested up to 600 MHz.

The system is designed to support protocols running at up to IEEE 802.3an 10Gbps, 1000 Mbps, such as ATM 622 Mbps and Gigabit Ethernet.

*About BMBLink:*

*Better communication is our  
livelihood ...*

***info@bmbblink.ir***  
***www.bmbblink.ir***

# Key Features

4-Pair Shielded ( SSTP ) Twisted Pair Network Cable

22 AWG Solid Bare Copper Conductors

Meets TIA/EIA, ISO/IEC, AS/NZS, & AS/ACIF Specifications

Suitable for current and future High Speed Networks such as Gigabit Ethernet and beyond

Meter Marked PVC Sheath

Cable Usage Record On Box

Easy to Handle and Install

100 ohm, foiled and shielded horizontal cable

4 individually foiled twisted pairs with an overall braid-shield

Very high performance, designed to support protocols running at up to IEEE 802.3an10Gbps, 1000 Mbps, such as ATM 622 Mbps and Gigabit Ethernet

Specified up to 600 MHz

Conforms to Category 7 cables specification as per IEC 61156-5 standard

Halogen-free (LSZH), flame-retardant (HFFR) or PVC jacket (Blue)

# Specification

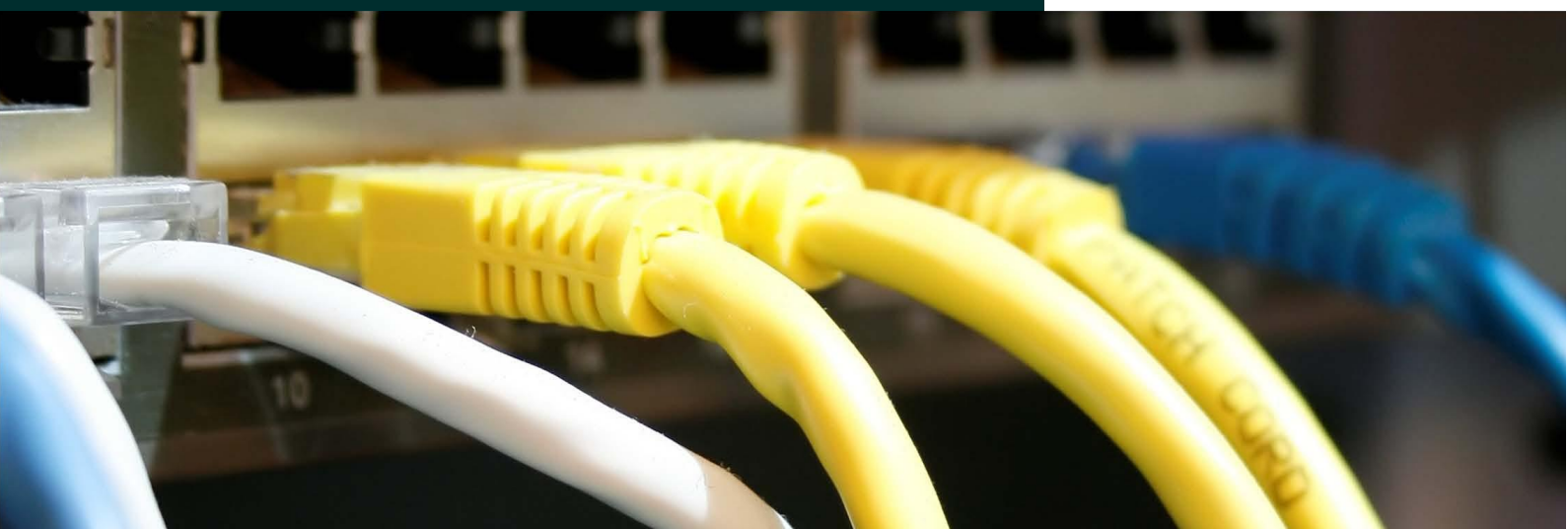
*Better communication is our livelihood ...*

04

*About BMblink:*

*Better communication is our  
livelihood ...*

***info@bmblink.ir***  
***www.bmblink.ir***



High Quality Network Cable

[www.bmblink.ir](http://www.bmblink.ir)

**BMB**

## GENERAL / ENVIRONMENTAL

Operating temperature:	+20 to +75 °C
Max tensile load:	98 N
Min Bend Radius:	8 x Outer Diameter

## ELECTRICAL CHARACTERISTICS

Dielectric Strength:	AC 0.7 kV (Min) (1.0 kV DC)
Insulation resistance:	$\geq 500 \text{ M}\Omega \cdot \text{km}$ @ 100-500 V
Characteristic Impedance:	$100 \pm 5 \Omega$ @ 100 MHz
Conductor Resistance Unbalance:	2% (Max)
Delay skew:	25 nS/100m @ 100 MHz (Max)
Mutual capacitance:	56pF/m (Max)
Propagation delay:	537.6nS/100m @ 100 MHz (Max)
Nominal velocity propagation:	62.3% Min @100Mhz

## CONDUCTOR

Material:	Solid bare copper wire
Size:	23 AWG
Conductor diameter:	1.36 mm
Insulation:	HDPE High Density Polyolefin
Insulation Diameter:	$1.02 \pm 0.08 \text{ mm}$
Resistance:	$9.38\Omega / 100\text{m}$ @ 20°C (Max)

## SHEATH / JACKET

Material:	PVC 75°C
Overall Diameter:	$6.1 \pm 0.15 \text{ mm}$
Flammability UL rating:	CM grade
Avg. thickness:	$0.60 \pm 0.02 \text{ mm}$
Filler:	PE isolator / separator

## PAIR IDENTIFICATION

Pair 1	Blue / White-Blue stripe
Pair 2	Orange / White-Orange stripe
Pair 3	Green / White-Green stripe
Pair 4	Brown / White-Brown stripe



High Quality Network Cable

[www.bmblink.com](http://www.bmblink.com)

**BMB**

# Performance

06

*About BMBLink:*

*Better communication is our  
livelihood ...*

***info@bmlink.ir***

***www.bmlink.ir***

High Quality Network Cable

[www.bmlink.ir](http://www.bmlink.ir)



## CERTIFICATION

Certified Category 7 by ETL / 3P



## STANDARD

ANSI/TIA/568-B.2-1 (Category 7)

ISO/IEC 11801: 2002 (Category 7)

AS/NZS 3080: 2003 (Category 7)

AS/ACIF S008: 2001

Frequency (MHz)		1	4	10	16	20	31.25	62.5	100	155	200	250	300	600
Insertion Loss (dB/100m)	Spec	2.0	2.0	5.7	7.2	8.1	10.1	14.5	18.5	23.4	26.8	30.2	33.3	48.9
	Typical	1.9	1.9	5.5	7.0	7.8	9.9	14.1	18.0	22.7	26.1	29.4	32.5	47.6
NEXT (dB)	Spec	80.0	80.0	80.0	80.0	80.0	80.0	75.5	72.4	69.6	67.9	66.5	65.3	60.8
	Typical	100.0	100.0	100.0	100.0	100.0	100.0	98.0	94.3	99.0	88.9	87.1	85.7	80.3
PSNEXT (dB)	Spec	77.0	77.0	77.0	77.0	77.0	77.0	72.8	69.4	66.6	64.9	63.5	62.3	57.8
	Typical	97.0	97.0	97.0	97.0	97.0	97.0	95.0	91.3	87.9	85.9	84.1	82.7	77.3
ELFEXT (dB/100m)	Spec	80.0	80.0	74.0	69.9	68.0	64.1	58.1	54.0	50.2	48.0	46.0	44.5	38.4
	Typical	90.0	90.0	90.0	86.7	84.8	80.9	74.9	70.8	67.0	64.8	62.8	61.3	55.2
PSELFEXT (dB/100m)	Spec	77.0	77.0	71.0	66.9	65.0	61.1	55.1	51.0	47.2	45.0	43.0	41.5	35.4
	Typical	87.0	87.0	87.0	83.7	81.8	77.9	71.9	67.8	64.3	61.8	59.8	58.3	52.2
Return Loss (dB/100m)	Spec	N/A	N/A	25.0	25.0	25.0	23.6	21.5	20.1	18.8	18.0	17.3	17.3	17.3
	Typical	27.0	27.0	30.0	30.0	30.0	28.6	26.5	25.1	23.8	23.0	22.3	21.8	19.7
ACR (dB/100m)	Typical	98.1	98.1	94.5	93.0	92.2	90.1	83.9	76.3	68.1	62.8	57.7	53.3	32.6
PSACR (dB/100m)	Typical	95.1	95.1	91.5	90.0	89.2	87.1	80.9	73.3	65.1	59.8	54.7	50.3	29.6

High Quality Network Cable

[www.bmbblink.ir](http://www.bmbblink.ir)

**BMB**